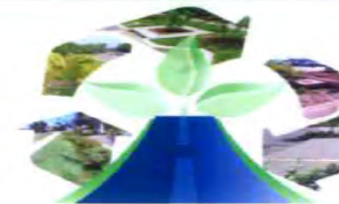




From Water Wise to Street Wise, One City's Efforts Toward Greener Streets

Larry Matel, P.E.

Managing Engineer
City of Bremerton, Washington



Articulated Vision

TRANSPORTATION ELEMENT



"... goes beyond a discussion of moving automobiles efficiently, to an examination of transportation needs for a healthy, vibrant community."

Transportation Vision

The City of Bremerton will promote convenient, accessible, safe, and environmentally responsible transportation for residents, employers, employees, visitors, and commerce. Bremerton will support alternatives to the automobile, such as walking, bicycling, public transportation, carpooling, ferries, etc. This transportation system will be integrated, convenient, and reliable, and will encourage connectivity and economic vitality. Bremerton's transportation system will support vibrant and healthy neighborhoods. Bremerton will incorporate aesthetic landscape and design elements to enhance neighborhood character and encourage safe and convenient walking and cycling.

Goals and Policies developed by the community to implement this vision are the core of this element. The Transportation Element Goals and Policies start on page TR10.

Comprehensive Plan – Land Use Policy 17



-The COB should adopt regional plans, strategies, and standards ... of the Puget Sound Action Team Water Quality Plan.

Purpose and Need

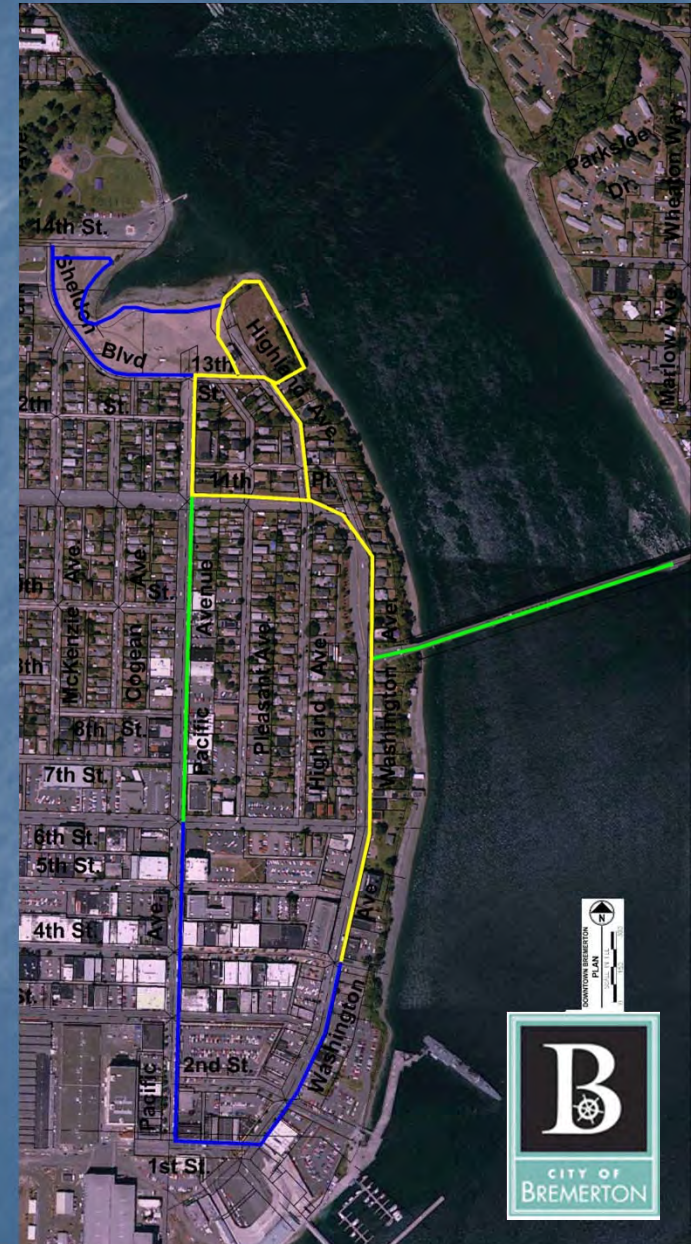
If you plan cities for cars and traffic, you get cars and traffic.
If you plan cities for people and places, you get people and places.

"Quote from Project for Public Spaces"



Connectivity

- Streetscape improvements on Washington Avenue from 5th to 11th, connecting to Pacific and the new Manette Bridge.
- Streetscape improvements on Pacific Avenue from 11th to Sheldon
- Additional streetscape along Sheldon Boulevard and Highland Avenue
- Abandon a failing beach sewer by constructing a new Sewer on Washington Avenue.



Pacific Avenue "Main Street" LID



Pacific Avenue – 6th to 11th



Project Goal



"Communities and established neighborhoods within the city each have a distinctive focus, yet all are walk-able and well connected to each other, including a vibrant downtown with a mixture of activities."

Excerpt from City Comprehensive Plan



Manette Bridge

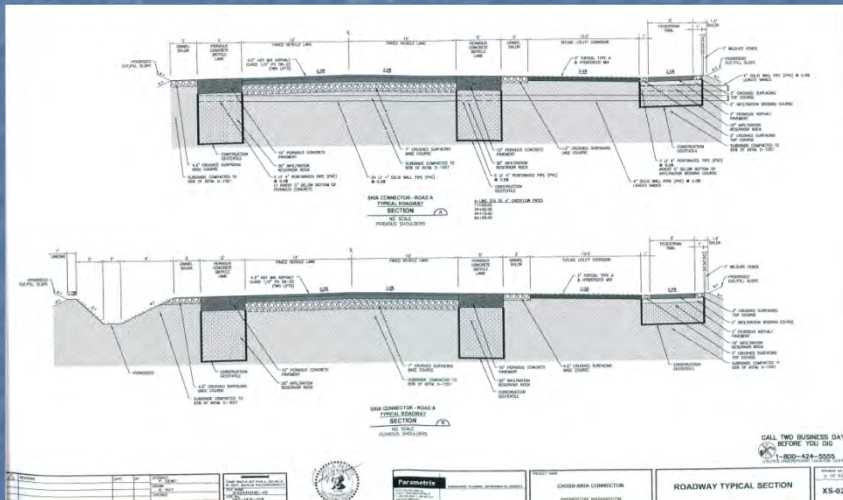
Manette Bridge Replacement
(Ferry View)



Washington State Department of Transportation



Economic Stimulus



A New Paradigm

“When you change the way you look at things, the things you look at change”.

- Dr. W. Dyer

and the inverse

When you change the things you look at,
the way you look at things changes.